

12 MM BORE STAINLESS STEEL METRIC CYLINDER

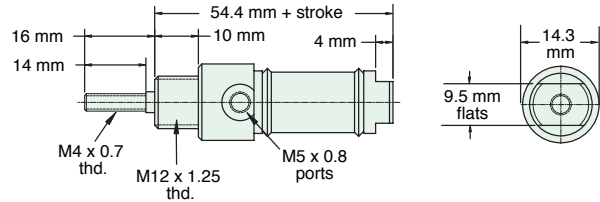


M-SDR-08-□-□

Double Acting



Mount: Stud
Type: Rotating Rod
Options: B, V
Standard Stroke Lengths: 10 mm, 25 mm, 40 mm, 50 mm, 80 mm, 100 mm, 125 mm, 160 mm



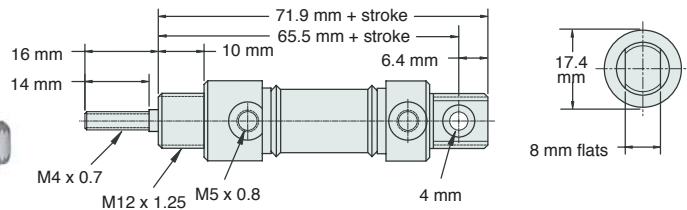
Nut included, but not shown on drawing

M-UDR-08-□-□

Double Acting



Mount: Universal
Type: Rotating Rod
Options: B, V
Standard Stroke Lengths: 10 mm, 25 mm, 40 mm, 50 mm, 80 mm, 100 mm, 125 mm, 160 mm



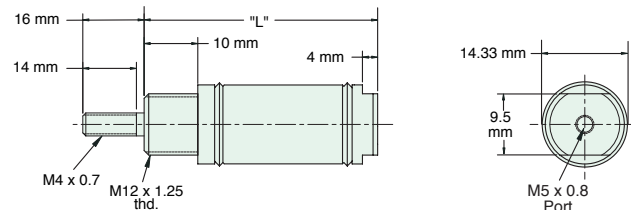
Furnished without nut(s).
 Order Part No. [NM10-125](#).

M-SSR-08-□-□

Single Acting



Mount: Stud
Type: Rotating Rod
Options: B, V
Standard Stroke Lengths: 10 mm, 25 mm, 40 mm, 50 mm, 80 mm, 100 mm



Nut included, but not shown on drawing

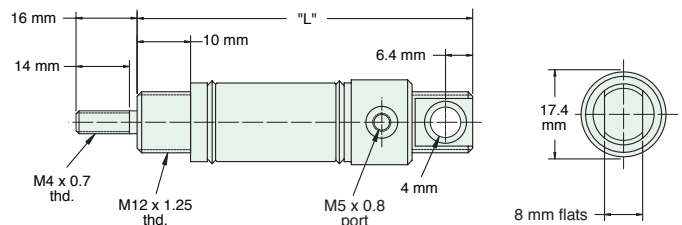
"L" (mm) for Standard Strokes						
Stroke	10	25	40	50	80	100
	56	83	120	130	193	224

M-USR-08-□-□

Single Acting



Mount: Universal
Type: Rotating Rod
Options: B, V
Standard Stroke Lengths: 10 mm, 25 mm, 40 mm, 50 mm, 80 mm, 100 mm



Furnished without nut(s). Order Part No. [NM10-125](#).

"L" (mm) for Standard Strokes						
Stroke	10	25	40	50	80	100
	73	100	137	141	210	241